



Cloud Connector

Date: 03.09.2024
More information: learn.swissalary.ch



Legal information

SwissSalary Ltd. reserves all rights in this document.

No portion of this work may be reproduced in any form or by any means, graphical, electronic or mechanical, including copying, recording, or by any information storage and retrieval systems, without the express written consent of SwissSalary Ltd.

SwissSalary Ltd. retains all intellectual property rights it is entitled to, in particular all patent, design, copyright, name and company rights and the rights to its knowhow.

Although all precautions have been taken during the creation of this document, SwissSalary Ltd. assumes no liability for errors, omissions or damage that may result from the use of the information contained in this document or from the use of the programs and source code. In no event shall SwissSalary Ltd. be liable for any loss of profit or other commercial damage caused or alleged to have been caused directly or indirectly by this document.

copyright 1998 - 2024 Swisssalary Ltd.

Date of change: 03.09.2024

Legal Notice

SwissSalary AG (SwissSalary Ltd.)
Bernstrasse 28
CH-3322 Urtenen-Schönbühl
Schweiz

Phone: +41 (0)31 950 07 77
support@swisssalary.ch
swisssalary.ch

Social media

Youtube
Facebook
Instagram
LinkedIn
Xing
Twitter

Certification

Swissdec

Index

1	Profile and information	
1.1	Cloud Connector applications	4
2	Settings	
2.1	Step 1. Install applications	5
2.2	Step 2a. Connected system configuration (on-Prem)	5
2.3	Step 2b. Connected system configuration (SaaS)	8
2.4	Step 3: Enable web services in the connected system (NAV/BC on-Prem, BC SaaS)	9
2.5	Step 4: Basic setup in SwissSalary	10
2.6	Step 5: OAuth setup (if OAuth 2.0 was selected as authentication type.)	11
2.7	Step 6: Setting up entities in SwissSalary	11
2.8	Step 7: Tenant setup	14
2.9	Step 8: Test connection	14
2.10	Step 9: Automatic execution	14
3	Permission sets and other settings	
3.1	Cloud Connector-related permission sets	15
3.2	Payroll Setup data settings	17
4	Error messages	
4.1	Debugging and error messages	18
5	Support	
5.1	SwissSalary	19

1 Profile and information

1.1 Cloud Connector applications

Cloud Connector applications enable automated exchange between entities in SwissSalary SaaS and:

- Business Central/Navision on-Premises
- Business Central in a Microsoft tenant different from SwissSalary SaaS
- Dynamics 365 applications.

Difference between Cloud Connector and SwissSalary Cloud Connector:

Cloud Connector is a tool for all Business Central tables and fields (not just for SwissSalary) that enables secure data import and export to and from a connected system.

SwissSalary Cloud Connector is a Cloud Connector extension used to start Cloud Connector automatically after pay process posting in support of payroll posting processes.

Cloud Connector and SwissSalary Cloud Connector are available to all SwissSalary customers (Basic, Plus, Budget) at no extra cost.

Both applications must first be installed from the [Microsoft AppSource Store](#).

2 Settings

2.1 Step 1. Install applications

1. In SwissSalary, navigate to "Extension Management", then under the "Manage" menu item click "Extension Marketplace".
2. Search for SwissSalary application "SwissSalary Cloud Connector" and click "Get now". This will install not only the "SwissSalary Cloud Connector" application, but also the "Cloud Connector" applications. "Cloud Connector" has basic functionalities of the "SwissSalary Cloud Connector" applications, so both applications must be installed.
3. The applications will be installed after a few seconds. You can check it by searching for Cloud Connector in the search field in your SwissSalary instance and going to the Cloud Connector Management page.

2.2 Step 2a. Connected system configuration (on-Prem)

This step will probably require support from your IT department.

I. Create new server instance (optional)

Since you are changing the settings of your Business Central or NAV server instance, you may be required to restart the service several times during this process. It is therefore recommended, but not mandatory, to have a separate server instance. This way, no users who may already be logged in in the local environment will not be affected by this process.

1. Open your "Business Central Server Administration Tool", right-click on the Business Central node and select "Add Instance".

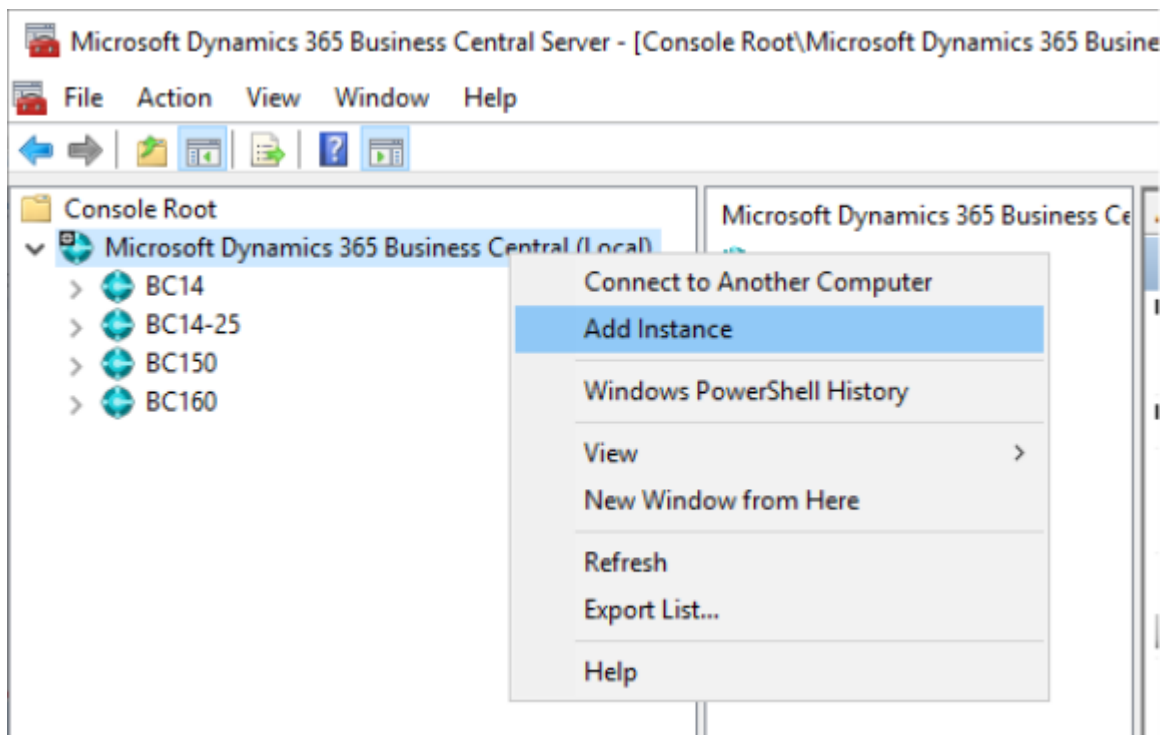


Figure 1

2. Fill in the window with the server instance information. Please note that all "Port" fields are required. Note the Odata Services port, and then click "OK".

The screenshot shows a 'Server Instance' configuration window. It is divided into two main sections: 'Server Instance Settings' and 'Service Account'. The 'Server Instance Settings' section contains five input fields: 'Server Instance:' (text box with 'Integration'), 'Management Services Port:' (text box with '0'), 'Client Services Port:' (text box with '0'), 'SOAP Services Port:' (text box with '0'), and 'OData Services Port:' (text box with '0'). The 'Developer Services Port:' field is also present but empty. The 'Service Account' section contains five input fields: 'Account:' (dropdown menu with 'Network Service'), 'User Name:', 'Domain:', 'Password:', and 'Confirm Password:'. At the bottom right of the window are 'OK' and 'Cancel' buttons.

Figure 2

II. Service for SSL configuration

1. Cloud Connector requires secure connections over HTTPS. To do this, a signed SSL certificate must be purchased and installed on the machine hosting the Business Central server instance. Pay special attention to the certificate thumbprint, as it is required to configure the Business Central server instance. The process of acquiring and installing this certificate is beyond the scope of this document. For more information, see this [Microsoft article](#).
2. The certificate thumbprint allows you to return to the Business Central Administration console. In the left bar, select the server instance to be used with Cloud Connector and click "Edit". Under the "General" section, fill in the "Certificate thumbprint" field and click "Save".

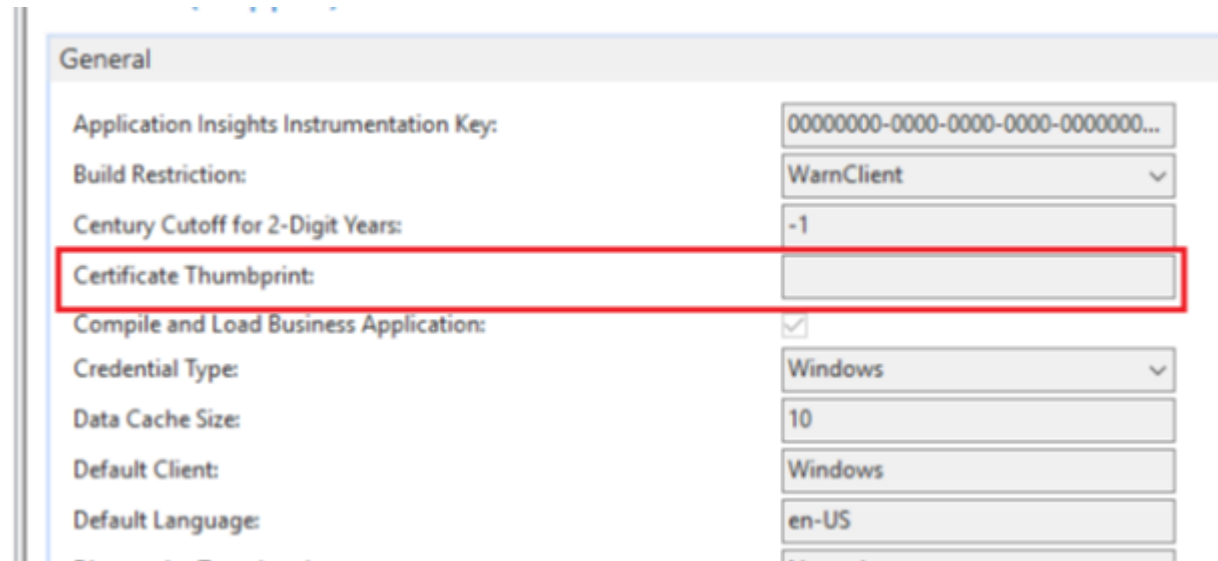


Figure 3

III. Configure Windows authentication

There are two relevant settings in the Business Central Administration console to enable Windows authentication for Cloud Connector. The first is credential type. It should already be set to "Windows". The second required setting is "Use NTLM authentication". Authentication will not work if this setting is not enabled.

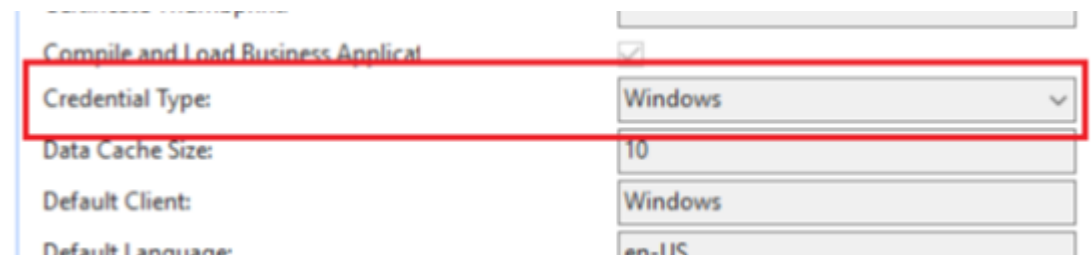


Figure 4

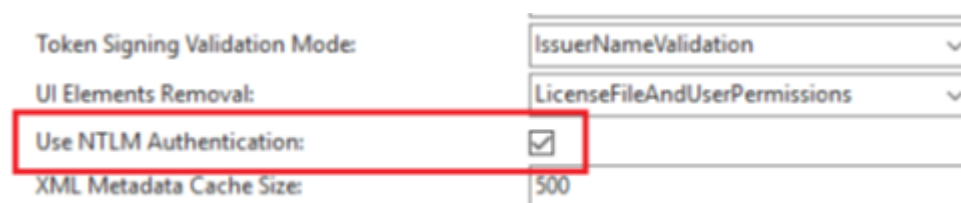


Figure 5

IV. OData – Enable connection

1. You now need to configure OData properties in the Business Central Administration console. After you select the correct Business Central server instance in the left bar, scroll down to the OData Services section in the Properties pane. Make sure that the settings below are enabled:
 - OData – Enable services
 - Enable SSL
 - V4 – Enable endpoint

Enable OData Services:	<input checked="" type="checkbox"/>
Enable SSL:	<input checked="" type="checkbox"/>
Enable V3 Endpoint:	<input checked="" type="checkbox"/>
Enable V4 Endpoint:	<input checked="" type="checkbox"/>
Max Connections:	0
Max Connections Per Tenant:	0
Max Page Size:	20000
OData Base URL:	
Port:	7048
Timeout:	00:08:00

Figure 6

2. Note the port number. It is the port that must be enabled for incoming network connections.

2.3 Step 2b. Connected system configuration (SaaS)

Configuration for Business Central Online in another tenant, or with Dynamics 365

The OAuth authorization protocol is recommended for connection between SwissSalary and Business Central Online or Dynamics 365 applications.

I. Register an Azure Entra application for authentication for Business Central Online or Dynamics 365 applications

1. Log in to the Azure portal.
2. Enter "App registrations" in the search field, then click "New registration".
3. Fill in the fields with the values below:

Name: Application display name. Example: "Business Central OAuth 2.0"

Supported account types: Select the option "Accounts in any organization directory (any Azure Entra directory – multi-tenant)"

Redirect URI (optional): Select "Web" in the "Select platform" field and enter the following URL in the field: "businesscentral.dynamics.com/OAuthLanding.htm"

4. Click "Register".

II. Grant the registered application permissions API.ReadWrite.All for Dynamics 365 Business Central or AX.Full Access and OData.FullAccess for Dynamics 365 applications

1. Go to the "API permissions" menu item and click "Add permission".
2. **A.** Business Central Online: Click the "Dynamics 365 Business Central" tile and then the "Application permissions" tile.
B. Dynamics 365 applications: Click the "Dynamics ERP" tile and then the "Application permissions" tile.
3. **A.** Business Central Online: Check the "API.ReadWrite.All" option and click "Add permissions".
B. Dynamics 365 applications: Check the "Connector.FullAccess" option and click "Add permissions".

Step 3. Create a client secret for your application.

1. Go to the "Certificates & Secrets" menu item and click "New client secret key".
2. Fill in the fields with the values below:

Description: "Business Central Client Service".

Valid until: Select the "Recommended: 180 days (6 months)" option.

3. Click "Add".
4. Securely copy and save the code from the "Value" column.

Step 4. Add the created application to Business Central Online.

1. Open SwissSalary365.
2. Search for "Microsoft Entra Applications" in the search box and navigate to them and click "New"
3. Fill in the fields with the values below:

Client ID: Enter your "Client ID". (See step x, item x)

Description: "Business Central OAuth 2.0"

Status: Select the "Activated" option.

4. Add the relevant permission sets on the "User Permission Sets" tab. The applications need permission sets with which Cloud Connector applications can read, edit or delete the tables to be synchronized.
5. Click "Consent" and select the account with the "Global Administrator" role in the dialog box, click "Accept" and then "OK".

2.4 Step 3: Enable web services in the connected system (NAV/BC on-Prem, BC SaaS)

Business Central/Navision on-prem, Business Central SaaS: Cloud Connector can only synchronize data that is available in the connected system via web services. This means that there must be a corresponding page on the web service page for each table you want to synchronize. The table below shows the web services that must be published.

To synchronize financial accounting-relevant tables or data between the connected system and SwissSalary, you must publish these web services in the connected system.

Object type	Object ID	Object Name	Service Name
Page	16	Chart of Accounts	CC_GIAccounts
Page	540	Default Dimensions	CC_DefaultDimensions
Page	536	Dimensions	CC_Dimensions
Page	537	Dimension Values	CC_DimensionValues
Page	312	Gen. Business Posting Groups	CC_GenBusPostingGroups
Page	251	General Journal Batches	CC_GenJournalBatches
Page	50204	Gen. Journal Line Api	CC_GenJournalLines
Page	50205	Gen. Journal Post Api	CC_GenJournalPost
Page	101	General Journal Templates	CC_GenJournalTemplates
		General Product Posting	
Page	313	Groups	CC_GenProdPostingGroups
Page	470	VAT Business Posting Groups	CC_VatBusPostingGroups
Page	472	VAT Posting Setup	CC_VatPostingSetup
Page	471	VAT Product Posting Groups	CC_VatProdPostingGroups

The pages shown in the table below are default pages in Business Central/Navision, with the exception of 50204 and 50205. This object provides the data in table 81. SwissSalary will provides you with the source code for this object. You can publish the associated web service after entering this object.

IMPORTANT! You or your NAV/BC partner must determine the ID of the additional object based on the free and licensed objects, within the licensed object number range. ID numbers 50204 and 50205 here are only as an example.

You can download the objects here.

2.5 Step 4: Basic setup in SwissSalary

1. **IMPORTANT: Cloud Connector applications are supported starting from NAV 2013 R2.**
2. In SwissSalary, search in the search bar and switch to "Cloud Connector Management", and click "Setup" and then "Basic settings".
3. On the "Basic settings" page, you can set up connection to one or more connected systems. Click "Management" and then "New" to create a new SETUP. A setup contains credentials or entity settings. You can specify the identifier and a description for the connections in the "Code" and "Description" fields, for example: Code: BC1, description: BC database 1 on-prem
4. The "Copy settings" button allows you to copy the settings already recorded in a setup. This functionality not only enables copying of the settings recorded on the "Basic settings" page, but also the settings recorded on the "Entity setup" page.
5. The fields below must be filled in:
 - a) **Base URL:** Specifies the base URL of the connected system's web service. It should resemble the following: `https://local.server.com/BC-Instance/odata/v4` depending on the service type used. It is required to specify a URL using https. Warning: insecure HTTP connection is no longer supported.
 - b) **Web service type (drop-down):** Specifies the type of the connected system's web service. ODataV4 is preferred. It may be set automatically, depending on the base URL you enter.
 - **OData V3 (NAV/BC):** OData is an open standard or protocol for providing and updating data over the Internet. V3 is a specific version of this protocol supported by these NAV/BC versions: NAV 2013 R2 and later.
 - **OData V4 (NAV/BC):** This OData version is preferred. OData v4 is available starting from NAV 2018.
 - **Business Central API:** refers to the default interface between SwissSalary and a Business Central Cloud instance.
 - **Finance and Operations:** refers to the default interface between SwissSalary and a Dynamics 365 Finance instance.
 - **Use proxy:** Specifies whether all web service traffic should be routed through a proxy. This can be crucial if the connected service is on a local network (for example, the ERP system is on-premise) and limits the scope of the required IP whitelist.
 - c) **Outgoing proxy address:** Specifies the list of possible outgoing IP addresses used by the SwissSalary proxy server. These IP addresses must have permissions to access the specified web service URL (if the connected service or ERP system is on-premise):
20.203.187.130,20.203.144.47,20.203.187.158,20.203.150.182,20.203.186.97,20.203.184.204,20.203.184.211,20.203.187.71,20.203.187.230,20.203.188.13,20.203.188.62,20.203.188.76,20.203.147.176,20.203.149.142,20.203.187.138,20.203.184.145,20.203.185.168,20.203.187.242,20.203.188.79,20.203.148.122,20.203.186.192,20.203.188.145,20.203.188.129,20.203.187.152,20.203.184.235,20.203.185.163,20.203.188.126,20.203.188.133,20.203.188.142,20.203.185.4,51.107.58.163.

- d) **Authentication type (drop-down):** Specifies the authentication type to be used when connecting to the service. You can enter multiple credentials per authentication type. If you are connecting to a service using OAuth 2.0 authorization, you must provide these details on the OAuth Setup page.
- **Basic authentication:** requires user name and password to access interfaces or web services. It is easy to implement but not particularly secure because credentials are transmitted in an unencrypted form. This authentication method is not supported.
 - **Windows Authentication (NTLM):** uses the credentials of the logged Windows user to access Microsoft Business Central. It provides single sign-on and is more secure than Basic authentication.
 - **OAuth 2.0:** OAuth uses tokens instead of user passwords and allows users to control access. OAuth is intended to be preferred for authentication.

Use the “Copy settings” button to copy the credentials from an authentication type that has already been entered.

Important: The set-up service user and the OAuth app must have at least BASIC permission set and read, insert, edit or delete permissions for the tables to be synchronized by the Cloud Connector in the connected system.

The “Enable schedule” and “Scheduled time” fields are explained below.

2.6 Step 5: OAuth setup (if OAuth 2.0 was selected as authentication type.)

The values below must be entered here:

1. **Client ID:** This is the value of the application ID or client ID from the Azure Active Directory application.
2. **Client secret key:** This is the value of the application key or client key from the Azure Active Directory application.
3. **Scope:** This is the scope within which an OAuth 2.0 token should be requested. It often looks like <https://xyz/default>, where “xyz” is the connected service’s base URL.
4. **Client secret key valid through:** This is where you specify the time the client secret key expires. This can be useful as a future reminder of the time the client secret key is about to expire.

Important! The values listed here (Client ID, Client secret key, Scope, Client secret key valid through) can be retrieved from the Azure AD Business Central Authentication application. (OAuth application setup video).

2.7 Step 6: Setting up entities in SwissSalary

1. On the “Cloud Connector Management” page, click “Setup” and then “Entity setup”.
2. The “Table ID”, “Source” and “Web service endpoint” table columns must be filled in.
 - **Table IDs:** The name of the SwissSalary/Business Central table is specified here. Click the “Table ID” column, click “Select from full list” and select the corresponding SwissSalary/Business Central table to which you want to transfer data from the connected system or from which you want to write data to the connected system. The same table can be set up multiple times, with different endpoints in the connected system.
 - **Order:** Specifies the order of synchronization of this entity table. Remember the table dependencies; the table relationships are validated during synchronization.

-
- **Source:** The direction of synchronization is specified here. If the source is Business Central, data from SwissSalary/Business Central will be synchronized to the connected system. If the source is external, data from the connected system is synchronized in SwissSalary/Business Central. Cloud Connector does not allow bidirectional synchronization of certain tables. Each table must have a single source, either SwissSalary/Business Central or the connected system.
 - **Automatic synchronization:** Specifies whether table changes in SwissSalary should be automatically synchronized with the connected system.
 - **Synchronize deletions:** Specifies whether deletions for this entity should be synchronized. Enabling this setting has a significant impact on overall synchronization performance.
 - **Web service end point:** The name (as you named the web services in the “Service name” field in step 5) of the table in the connected system is specified here. Click the “Web service endpoint” column and enter the table name.
3. You can set up the mapping of the fields to be synchronized by clicking the corresponding table name. The fields below can be filled in the “Entity fields mapping” section as follows:
- **Field ID:** The ID of the field in the mapped SwissSalary/BusinessCentral table is specified here.
 - **Field name:** The name of the field in the mapped SwissSalary/BusinessCentral table is specified here.
 - **Service field name:** The name of the field in the mapped table of the connected system is specified here.
 - **Enabled:** This is where you specify whether this field should be included when updating records in the source or target instance.
 - **Key:** It is specified here whether this field is part of the key (primary key) for this entity.
 - **Validate:** It is specified here whether the table field validation should be performed when data is set for this field. This only applies when data is imported from the connected system into SwissSalary.
4. If you have selected the “External” value in the “Source” column, the “Entity field constants” section is displayed. The fields in the “Entity field constants” section below can be filled in here as follows:
- **Field ID:** This is where the constant value that should be set for the field in new records coming into Business Central is specified.
 - **Field name:** The name of the field in the mapped SwissSalary/BusinessCentral table is specified here.
 - **Constant value:** This is where the constant value that should be set for the field in new records coming into Business Central is specified.
 - **Enabled:** This is where you specify whether this field should be included when updating records in the source or target instance.
5. If you click “Fields”/“Reset fields to default” in the “Entity fields mapping” section and then in the “Entity field constants” section, all fields in the selected tables will be listed.
6. **Important:** Some payroll-related entities are already predefined. In this case, you do not need to set up these entities again, but can go directly to steps 9 and 10. You also have the option of setting up other entities that are not already predefined by SwissSalary Cloud Connector like the employee card.

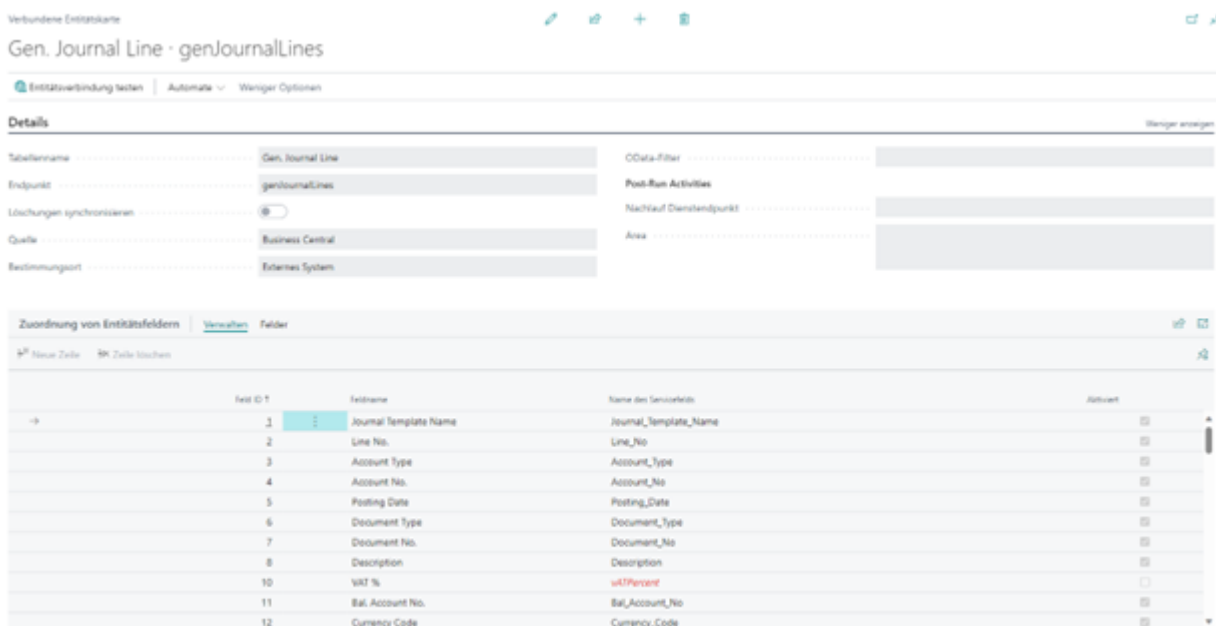


Figure 7

7. **Odata filter (optional):** If "Source" has the "External" value, the OData filter can be set. Filter expressions in this field can be used according to these instructions.
8. **Automatic synchronization:** Specifies whether table changes in SwissSalary should be automatically synchronized with the connected system.
9. **Synchronize deletions:** Specifies whether deletions for this entity should be synchronized. Enabling this setting has a significant impact on overall synchronization performance.
10. **Skip data integration checks:** It is specified here whether data integrity checks in SwissSalary that are performed for this entity before synchronization should be ignored.
11. **Follow-up service endpoint (optional):** An endpoint to be retrieved in the connected system after the entity has been successfully synchronized is specified here. This can be used if an action should be performed after the table data has been successfully synchronized. See step X
12. **Follow-up requirement text (optional):** You can specify here a constant value to be sent to the service endpoint specified in the "Follow-up service endpoint" field. Field names or the corresponding values must be specified here as JSON.

Automatic posting of financial accounting and cost recording journals in Business Central/Navision on-prem and Business Central SaaS.

If financial accounting and cost recording journals transferred to the connected system are to be posted automatically in the connected system after synchronization, the settings below must be adjusted:

1. **A. Business Central on-Prem:** You must install two new objects (Gen-Journal Line Post and Cost-Journal Line Post) in the connected system and publish them as web services. These objects are provided to you by SwissSalary so that the Post function can be called by web services.
 - B. Business Central SaaS:** You must publish the CodeUnit web service: 231 Publish Gen. Jnl.-Post as a web service so that the Post function can be retrieved by web services.
2. On the "Entity setup" page, you must select the appropriate web services for the "Post" function in the "Post-run service endpoint" field for the Gen. Journal Line and Cost Journal Line entities.

-
3. On the "Entity setup" page, you must enter the json below as the request body for the Gen. Journal Line and Cost Journal Line entities in the "Post-run" request text field:

```
{  
  "JournalTemplateFilter": GENERAL  
  "JournalBatchFilter": "$L-*$"  
}
```

2.8 Step 7: Tenant setup

1. On the "Cloud Connector Management" page, click "Setup" and then "Entity setup". You can select here which clients should be enabled for synchronization in Cloud Connector and, in particular, how companies should be assigned between the two systems. This can be important if the names of the tenants in SwissSalary/Business Central and in the connected system are different.
2. An entity card opens where you can set up the assignment of the tenants to be synchronized. The fields below can be edited here:
 - **Enabled:** Indicates whether this company should be enabled for Cloud Connector.
 - **Name of the connected company:** The name of the company in the connected system is specified here. Use the "AssistEdit" function (see para. 3) to search for and select a company from the connected system. Prior to enabling this company for Cloud Connector, a value must be specified.
3. **AssistEdit feature:** If you click the three dots in a row in the "Affiliated company name" column, you can view the available values for the "Affiliated company name" field.

2.9 Step 8: Test connection

1. After you setting up the entities or tenants, you can test Cloud Connector.
2. Open the entity card of the entity to be tested (click "Setup" / "Set up entities" and then click the table to be tested) and click "Test entity connection".
3. A pop-up window will show whether the test was successful. If an error occurs, an error message will be displayed with the error description.
4. Attention: You must test each setup individually.

2.10 Step 9: Automatic execution

1. On the "Basic setup" page, you can set the Boolean field "Enable schedule" to Yes and specify the frequency of automatic execution in the "Scheduled time" field. A Task queue item will be created.
2. Two new fields will be displayed with this setting: "Company task queue" shows the tenant name for which the task queue item was created, the "Task queue user" field shows the user that created it. Although task queue items are cross-tenant, you can only edit the task queue items that have already been created in the tenant in which they were originally created. The "Company task queue" field shows this tenant.
3. On the "Entity setup" page, you can enable the Boolean field "Automatic synchronization" for each entity. This means that the changes in the entity are automatically synchronized with the connected system after the change.

Important: we recommend not activating the Boolean field "Automatic synchronization" for the Gen. Journal Lines and Cost journal Lines entities, as it may lead to errors.

3 Permission sets and other settings

3.1 Cloud Connector-related permission sets

SwS CC Runner: Has permissions to write the CC Run/Log tables. Only relevant if “Automatic synchronization” is enabled (it is now set up on the entity). If the user changes a table enabled for automatic synchronization, an execution will be triggered automatically. If the user who changed the table is not granted this permission (or SwS CC Admin), then no automatic execution will be started. This user is not allowed to start manual executions.

Typ	Object type	Object ID	Object Name	Object designation	Read permission	Insert permission	Edit permission	Delete permission	Launch permission
Included	Table data	3096571	SwS CC Auth Setup	Setting up authentication	Yes	Yes	Yes	Yes	
Included	Table data	3096561	SwS CC Company Run	Company run	Yes	Yes	Yes	Yes	
Included	Table data	3096565	SwS CC Company Setup	Company setup	Yes				
Included	Table data	3096566	SwS CC Entity Setup	Company setup	Yes				
Included	Table data	3096567	SwS CC Entity Field Setup	Entity field setup	Yes				
Included	Table data	3096568	SwS CC Base Setup	Cloud Connector setup	Yes				
Included	Table data	3096569	SwS CC Entity Log	Entity log	Yes	Yes	Yes	Yes	
Included	Table data	3096572	SwS CC Entity Log Detail	Entity log details	Yes	Yes	Yes	Yes	
Included	Table data	3096576	SwS CC Run	Connector run	Yes	Yes	Yes	Yes	

SwS CC Admin: Full access permissions. Can change CC settings and start manual executions.

Typ	Object type	Object	Object Name	Object designation	Read permission	Insert permission	Edit permission	Delete permission	Launch permission
-----	-------------	--------	-------------	--------------------	-----------------	-------------------	-----------------	-------------------	-------------------

		ID			on	on		on	
Included	Table data	472	Job Queue Entry	Command queuing posts	Indirekt	Indirekt	Indirekt	Indirekt	
Included	Table data	3096 561	SwS CC Company Run	Command queuing posts	Yes	Yes	Yes	Yes	
Included	Table data	3096 565	SwS CC Company Setup	Company setup	Yes	Yes	Yes	Yes	
Included	Table data	3096 566	SwS CC Entity Setup	Entity setup	Yes	Yes	Yes	Yes	
Included	Table data	3096 567	SwS CC Entity Field Setup	Entity field setup	Yes	Yes	Yes	Yes	
Included	Table data	3096 568	SwS CC Base Setup	Cloud Connector setup	Yes	Yes	Yes	Yes	
Included	Table data	3096 569	SwS CC Entity Log	Entity log	Yes	Yes	Yes	Yes	
Included	Table data	3096 571	SwS CC Auth Setup	Authentication setup	Yes	Yes	Yes	Yes	
Included	Table data	3096 572	SwS CC Entity Log Detail	Entity log details	Yes	Yes	Yes	Yes	
Included	Table data	3096 576	SwS CC Run	Connector run	Yes	Yes	Yes	Yes	
Included	Codeunit	3096 589	SwS CC Manual Run Manager	SwS CC Manual Run Manager					Yes
Included	Codeunit	3096 590	SwS CC Scheduled Run Manager	SwS CC Scheduled Run Manager					Yes

Important: The user running Cloud Connector manually or by setting up a task queue item must have the appropriate read, insert, edit or delete permissions for the tables in SwissSalary that are to be synchronized by Cloud Connector.

3.2 Payroll Setup data settings

1. Navigate to the "Payroll master data" page in SwissSalary.
2. In the "Settings" section, you can select Cloud Connector in the "FIBU posting" or "Cost center posting" fields. If you select this setting, financial accounting or cost journal rows will be automatically posted in SwissSalary after they have been successfully synchronized with the connected system by Cloud Connector.
3. IMPORTANT: This step must be carried out individually for each tenant where you want to use Cloud Connector.
- 4.

Lohnstammdaten

Domäne Einrichtung Store Zugehörig Berichte Automate Weniger Optionen

Umsatzjahr: 2024

Dienstjahr Anzahl: 12

Dienstjahr Perioden-Berechnung: pro Rata

Lohnartenstamm: 201 Tage

Abrechnungsverfahren: Abkonto für Stundenlohn

Abkonto SL nur Differenz:

Abkonto ohne Feriengeld bei Austritt:

Abkonto ohne 13./14. M. bei Austritt:

Excel Export via Standard Excelpuffer:

Automatismen Ein/Austritt

Berechnung Ein/Austritt:

Auto. Saldoausgl. bei Austritt:

Automatischer Abzinsvortrag:

Rapportierung

Kostenrechnung Dimension Prüfung deaktivieren:

WW Ansatz nicht autom. aktualisieren:

Stundenlohn Stillerprozent Berechnung (Pro Rata):

Store

Store Nachrichten speichern:

Resource Verrechnung:

Resource Datenvorlage:

Arbeitszeitkalendar:

Transfer ARGE in Rechnung:

Rundungspräzision-Jahr: 0.05

Rundungsart: kaufmännisch

Personalkarte

Mitarbeiternummern: PERSONAL

Telefon Nr. Format:

Alle Mitarbeiter in Lookups anzeigen:

Lohnverbuchung FIBU/Kostenrechnung/Projekt

Transfer in FIBU: Standard

Transfer in Kostenrechnung: kein Transfer

Transfer in Projekt: kein Transfer

Verbuchung FIBU: Cloud Connector

Kostenstellenbuchung: Cloud Connector

Verbuchung Projekt: Automatisch

Projekt Einstandspreis: SwissSalary/Resource

Kostenrechnung Konto-Matrix: Buchungsgruppe

Dimensionsplittung auf Bilanzkonten:

FIBU Buch.-Blatt Vorlage: ALLGEMEIN

Fernnummer Schaltstelle:

Figure 8


4 Error messages

4.1 Debugging and error messages

After manual or automatic Cloud Connector execution, the entities can have the statuses below:

- **Completed:** the entity was synchronized without errors.
- **Completed with errors:** the entity was only partially synchronized without errors, there were errors in some rows.

The InfoBox area shows the number of entities that were synchronized successfully, with errors or with no updating:



The screenshot shows a table with the following data:

Tabellenname	Synchronisierungsric...	Status ↑	Details
Gen. Journal Line	Business Central → ...	Abgeschlossen mit Fehle...	...
G/L Account	Externes System → ...	Keine Änderungen	...
Gen. Journal Template	Externes System → ...	Keine Änderungen	...
Gen. Journal Line	Business Central → ...	Keine Änderungen	...
Gen. Journal Batch	Business Central → ...	Keine Änderungen	...
Gen. Business Posting Gr...	Externes System → ...	Keine Änderungen	...

To the right of the table is a summary panel titled "Entitätsprotokoll - Übersicht" with the following data:

Eingefügte Datensätze	152
Geänderte Datensätze	0
Gelöschte Datensätze	0
Fehlgeschlagene Datensätze	278

Figure 9

After clicking the number on Failed records, the fields below are displayed:

- **Process:** the function is displayed: Insert, Modify or Delete
- **Status:** shows whether the request was successful or failed.
- **Record ID:** shows the primary keys of the affected records.
- **Requirement information:** shows the type of request (POST; PATCH; DELETE) and the request URL as well as the request body
- **Details:** includes the detailed error message.

No changes: there were no changes to be synchronized in the connected system or in SwissSalary.

Failed: due to a fundamental error in SwissSalary, the entities could not be synchronized.

5 Support

5.1 SwissSalary

If you have any questions about Cloud Connector applications setup, SwissSalary Support will be happy to help:

[Support SwissSalary](#)